

# MANUFACTURING DIGITALISATION CAPABILITY ASSESSMENT SERVICE

2024 SMDH Programme



BUSINESS  
PERFORMANCE &  
CAPABILITY LAB

**MADE  
SMARTER**  
INNOVATION

SMART  
MANUFACTURING  
DATA HUB



Hosted by

**VyneAnalytics**



# DIGITALISATION CAPABILITY ASSESSMENT SERVICE

## 1. The Problem

50-70% of digital transformation projects fail. Current digitalisation readiness assessments focus on data and stakeholders, without necessarily linking to the rest of the business functions or strategy.

## 2. The Opportunity

We believe that digitalisation preparation can be done better and more consistently. We at Heriot-Watt University and Vyne Analytics have created the tools for it and mapped out the manufacturing support ecosystem for you. This has been shown to support strategic alignment, and improve operational efficiencies and profitability by up to 20-30% over 5 years.

## 3. The value

This project provides a free 1-year subscription for up to 60 SMEs to our partner Vyne Analytics' capability assessment dashboard and a free onsite audit, funded by the Smart Manufacturing Data Hub, all worth £5000 per SME.

## How do I Sign Up?

- Register for one of our online events on Eventbrite, or attend one of our partner workshops through the Smart Manufacturing Data Hub, CeeD Scotland or Heriot-Watt University. **OR**
- Email [info@vyneanalytics.com](mailto:info@vyneanalytics.com) with the headline SMDH signup providing a link to your company website for validation to be offered a voucher for the service.

## Upcoming Events :

### ONLINE:

- [2<sup>nd</sup> October 2024](#)
- [30<sup>th</sup> October 2024](#)
- [11<sup>th</sup> December 2024](#)

### IN PERSON:

- [23<sup>rd</sup> Oct – Manufacturing & Supply Chain Expo, Glasgow](#)
- [27<sup>th</sup> Nov - Lean i4.0 Day, Heriot-Watt University](#)

## Partners :



BUSINESS  
PERFORMANCE &  
CAPABILITY LAB

**MADE  
SMARTER**  
INNOVATION

SMART  
MANUFACTURING  
DATA HUB

**VyneAnalytics.com**



Centre for Engineering  
Education & Development

## TANGIBLE IMPACT

**20%**

Capacity increase in contract maintenance and service delivery\*

Up to **30%**

Improved 5-year Profitability\*

## BENCHMARKED

Assessment Score using cohort and Smart Manufacturing Data Hub data

## COMPREHENSIVE

Strategy Alignment with key business functions and value streams

## CLARITY

Individualised measures enabling better stakeholder communication of key growth areas and excellence capabilities

\* Based on completed manufacturing industry case studies

# PROJECT PROCESS

1

Get the **project voucher** for the VyneAnalytics platform from one of the project partners (Heriot-Watt University, VyneAnalytics, Smart Manufacturing Data Hub, CeeD Scotland, or Interface Scotland), or by attending one of our workshops.

Then **sign-up!**



2

Complete the 7-step assessment. This will populate the dashboard and give you an overall and component **maturity score**.

You can re-take this assessment periodically or as often as you have an **update**.



3

Notify your contact that you are ready to verify your readiness score through the free **audit**.

You will then be contacted by Heriot-Watt University to arrange and audit on a suitable date before the project end date on the **17<sup>th</sup> January 2025**.



# ASSESSMENT COMPONENTS





## FREQUENTLY ASKED QUESTIONS

- What size company do I have to be for this to be relevant to me?

Our framework has been tested with micro, small, and medium-sized manufacturing companies during development. We are confident our assessment will be relevant to most organisations.

- What data will I share and how will it be used?

The assessment matches your organisation against a set of evidence-based scales. We will only share the anonymised scores and measure answers with the Smart Manufacturing Data Hub, to improve the service level offered to SMEs. No industry-sensitive information will be collected.

- Is there any evidence for this approach?

The assessment and audit process have been validated with micro, small, and medium throughout several research and consultancy projects, supported by organisations such as Innovate UK. Some of this work has supported earlier initiatives, such as the [Scottish Manufacturing Advisory Service](#) (SMAS).

- How is this different from other available resources such as from SMDH or SMAS?

We are building on the existing knowledge to address the *strategic, operational, and learning* capabilities required to grow in technological maturity, increase capacity in a benchmarked way, and link you to the existing ecosystem. To do this effectively, we will first assess your current capabilities. Depending on your score, it may be that one of the recommendations includes resources like SMAS or SMDH.

- Is this assessment limited to any specific industries?

No, although the assessment does focus on manufacturing organisations. Our clients range from academic spinouts, to brewers and distillers, healthcare, fibre artists and cable manufacturers.

- My company works with SMEs. Can I still apply?

Absolutely. We can help align your portfolio and supply chain through our assessment and can offer follow-up consultancy through the relevant consortium partner.

## HOW TO SIGN UP

Visit the platform:

<https://vyneanalytics.com/digital-transformation/>

Smart Manufacturing Data Hub  
Digital Capability Programme

Voucher Code:  
**BPCLHWU2024**



# MANUFACTURING SMARTER

The Smart Manufacturing Data Hub (SMDH) supports small and medium-sized manufacturers to become more competitive by harnessing the power of data.



## Here's what we offer



### Low Cost Solutions

We have a directory of low-cost data solutions that can be deployed across a range of manufacturing sectors to help you start your data journey.



### Virtual Hub

We offer secure data transfer, storage, analysis and dashboarding through our virtual hub. You always remain in control of your data without vendor lock-in.



### Professional Development

Access training on digitalisation, learning resources and like-minded communities to enhance your workforce skills.



### Funding

Companies who work with the Smart Manufacturing Data Hub, are eligible to apply for grant funding on a match fund basis, to allow for further development of digital technology in their factory.



## KEY PARTNER

# Business Performance & Capability Lab (BPCL)

The Business Performance & Capabilities lab is designed for impactful, practice-oriented research around the measurement and management of business performance capabilities.



## Our Mission and Vision

Our Mission is to engage and collaborate with Scottish businesses from the private and public sectors in collaborative research to investigate and develop solutions to their challenges in measuring and managing business performance and capabilities.

Our Vision is to be a practice-led, interdisciplinary research platform that develops practically useful and theoretically sound knowledge in measuring and managing business performance and capabilities.



**KEY PARTNER**

**VyneAnalytics**

**VyneAnalytics provide the platform for the assessment, audit, and consulting of digitalisation readiness, technology readiness levels, and strategic capabilities.**

Vyne Analytics Ltd accelerates business growth with capability analytics. Our measurement and auditing tools give manufacturing SMEs unique insight into the business capabilities that drive real growth and reinforce data-driven decision-making.

Measuring capability maturity in manufacturing SMEs has traditionally been highly subjective, resulting in chaotic digital transformation projects, biased risk profiles, inflated valuations and misleading communication. Our capability analytics replace subjectivity with unbiased data-driven capability insights that precisely identify technology-capability gaps, independently assess risk exposure, uncover real intrinsic value and enhance strategic stakeholder communications.

Our scientifically proven audit methodology delivers transparent, reliable, and robust analysis and transformation roadmaps, uncovering unknown risks, reducing uncertainties and strengthening your decision-making.

## **Accelerate Growth With Capability Analytics**

GAIN INSIGHT, DRIVE GROWTH

Gain unique insight into the capabilities that drive real growth and reinforce your data-driven decision making with Vyne Analytics.

## KEY PARTNER



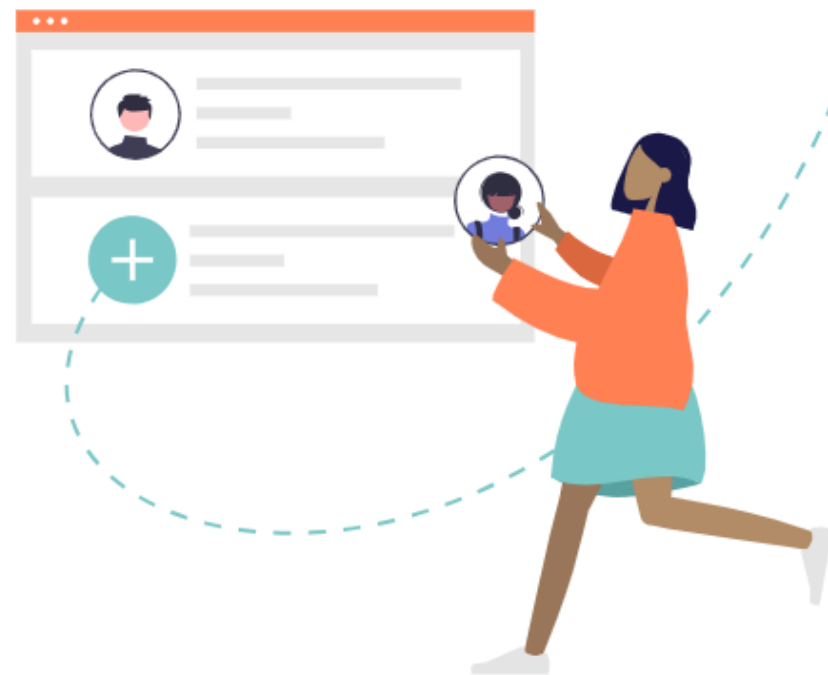
**Established in 2005, Interface brings Scotland's business and academic communities together.**

With connections into all Scotland's universities, colleges and research institutes the Interface team is based regionally to support businesses, third and public sector organisations by building collaborations with academia.

Interface's free and impartial service has helped thousands of businesses to save time and money to access academic expertise, research, funding, technologies and facilities which enables them to solve challenges, innovate, grow and ultimately become more sustainable.

By working closely with the academic community Interface supports their priorities helping to ensure that collaborating with businesses makes an impact to research and learning and drives regional economic transformation.

[Contact Us](#)



## KEY PARTNER



# EE | CeeDucation

Growth500 | Executive Leadership | Growth5.0

CeeD is a growing community of businesses and academics. We've joined together to pool our talents, expertise, experience and resource in the pursuit of operational excellence within our own organisations - and yours. In doing so, our aim is to improve operational efficiency and effectiveness - improvements that will impact the bottom line.

As a community, what binds us together is the common aspiration to improve operational efficiency, effectiveness and ultimately profit. We do this by pooling our collective expertise, resources, knowledge and experience to solve specific operational challenges and improve general operational performance.

EE | CeeD  
Centre for Engineering  
Education & Development